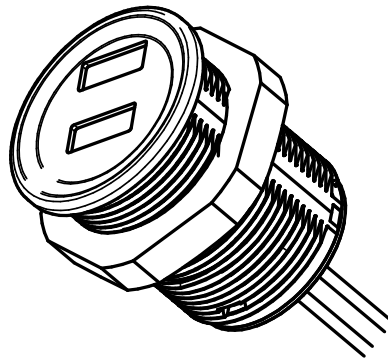


IntegraBus
ULA914
Double USB type-A charger



Datasheet
Rev. 01

Table of contents:

1.	Product Overview	2
2.	Electrical Specification	2
3.	System Diagram	3
4.	Functional Description	3
5.	Certifications	4
6.	Mechanical Specification	4
7.	Installation	5
8.	Ordering Codes	5
9.	Connector Pinout	5
10.	Document History	6

1. Product Overview

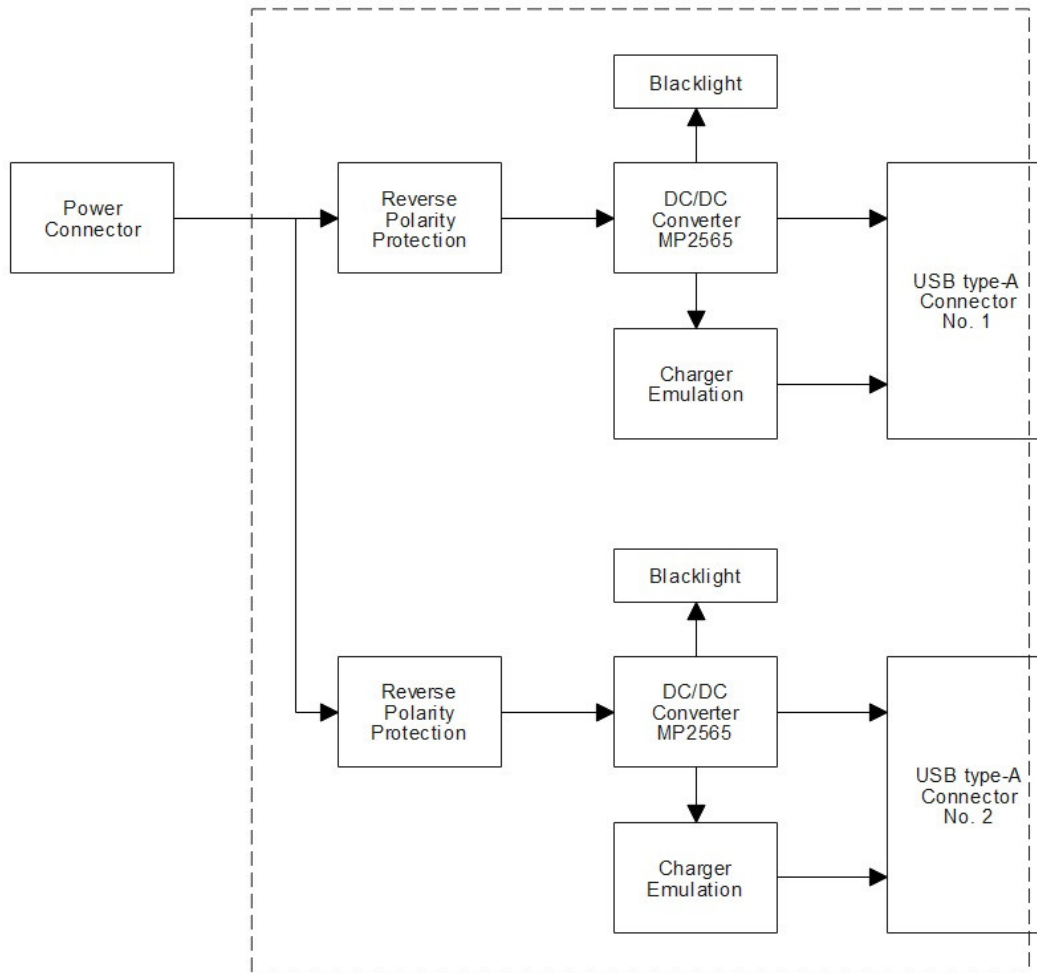
The PCS-AAH-xxx double USB type-A charger module intended for use in buses/coaches. It allows two connected and charged device in same time.

The charger has two high-power USB type-A port. These ports can be used with most of the popular mobile devices.

2. Electrical Specification

		Min.	Norm.	Max	
1.	Supply Voltage	10	24	48	V
2.	Operating Temperature	-40		+85	°C
	USB type-A Port				
3.	Output Voltage	4.75	5	5.25	V
4.	Output Current (@ 5V output voltage)			2.5	A
5.	Efficiency of USB-A port	87			%
6.	Output Power			2 x 12.5	W
7.	Backlight		White		

3. System Diagram



4. Functional Description

- Two mobile devices can be charged simultaneously.
- Standard USB type-A connector outputs,
- USB type-A output can supply 2.5A current maximum at 5V output voltage,
- Easy to install
- Supported mobile devices:
 - o iPod, iPhone, iPad,
 - o Android phones and tabs
- Supported Charge Profiles On USB type-A connector:
 - o Divider 1 DCP, (required to apply 2 V and 2.7 V on D+ Line on the D+ and D- Lines)
 - o Divider 2 DCP, required to apply 2.7 V and 2 V on the D+ and D- Lines

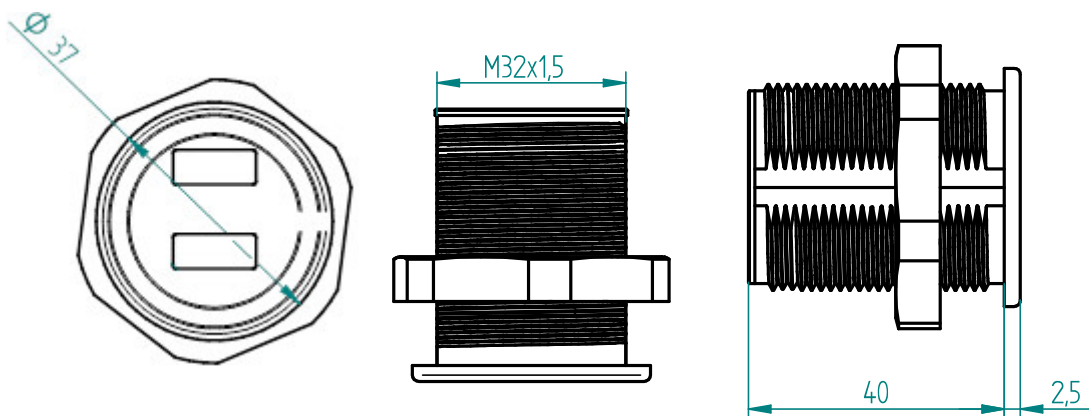
- Divider 3 DCP, required to apply 2.7 V and 2.7 V on the D+ and D- Lines
- BC1.2 DCP, required to short the D+ Line to the D- Line
- Chinese Telecom Standard YD/T 1591-2009 Shorted Mode, required to short the + Line to the D- Line
- 1.2 V on both D+ and D- Lines
- Automotive environment compatible design
- Overcurrent protection, overvoltage protection, thermal protection

5. Certifications

ECE R10 certification:	E-24 10R-041054
ECE R118 certification:	Housing weight is less than 15 g, application of R118 is not necessary on housing, Power cable is R118 certified.

6. Mechanical Specification

- Rigid plastic housing
- Material: PC ABS
- Default housing colour: Black, more colours are available upon request



7. Installation

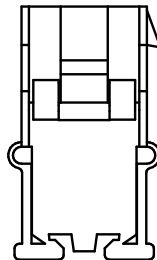
The installation requires a round hole of 32 mm (1 1/4") diameter.

8. Ordering Codes

Number	Cable	Connector
ULA914	300mm	Tyco JPT, 2 pins
ULA914-3S	300mm with shrinking tube	Tyco JPT, 2 pins
ULA914-16S	1600mm with shrinking tube	Tyco JPT, 2 pins

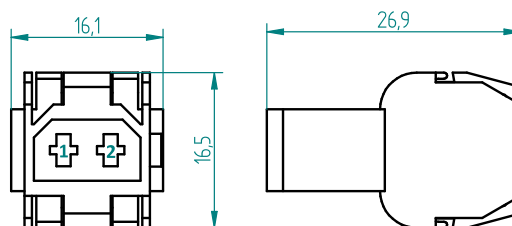
9. Connector Pinout

Housing: Tyco 964586
 Terminal: Tyco 964273-2



Pin	Wire	Function
1	RED	+12 – 24V Input
2	BLACK	GND Input

Pin	Wire	Function
1	RED	+12 – 24V Input
2	BLACK	GND Input



10. Document History

rev	History	Date	Author
R01	First release	2021.12.03.	epapp